

PAYA LEBAR METHODIST GIRLS' SCHOOL (PRIMARY)
PRIMARY 4 MATHEMATICS
2025 WEIGHTED ASSESSMENT 1

Name : _____ () Date : _____

Class : P4 _____ Marks : / 32

Parent's Signature: _____

Section A:

Questions 1 to 6 carry 2 marks each. For each question, four options are given. One of them is the correct answer. Make your choice (1, 2, 3 or 4). (12 marks)

1. $12\,608 = 10\,000 + 2000 + \boxed{?} + 8$

What is the missing number in the box?

- (1) 6
- (2) 60
- (3) 600
- (4) 6000

()

2. What is the missing numerator in the box?

$$4\frac{1}{3} = \frac{\boxed{?}}{3}$$

- (1) 13
- (2) 12
- (3) 8
- (4) 5

()

3. The table shows the number of books read by the students in Class 4E in a week.

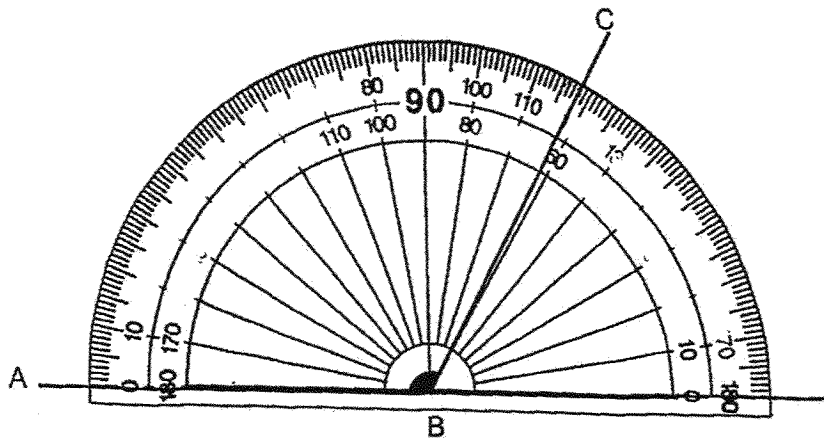
	Number of fiction books	Number of non-fiction books
Girls	35	29
Boys	23	22

How many more fiction books were read by the girls than the boys?

- (1) 13
- (2) 12
- (3) 7
- (4) 6

()

4. Find $\angle ABC$.



- (1) 62°
- (2) 78°
- (3) 118°
- (4) 122°

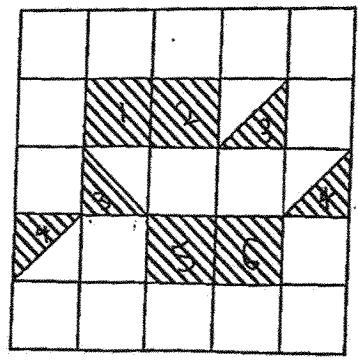
()

5. 4 is not a factor of _____.

- (1) 16
- (2) 27
- (3) 32
- (4) 60

()

6. How many more squares must be shaded so that $\frac{2}{5}$ of the figure is shaded?



- (1) 6
- (2) 2
- (3) 10
- (4) 4

()

Section B:

Questions 7 to 12 carry 2 marks each. Show your working clearly in the space below and write your answers in the spaces provided. For questions which require units, give your answers in the units stated. (12 marks)

Do not write
in this
space

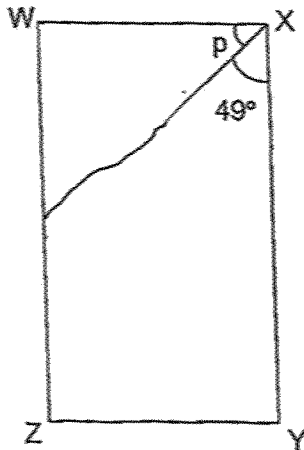
7. (a) What is the first common multiple of 3 and 7?

Ans (a): _____

(b) Round 18 067 to the nearest hundred.

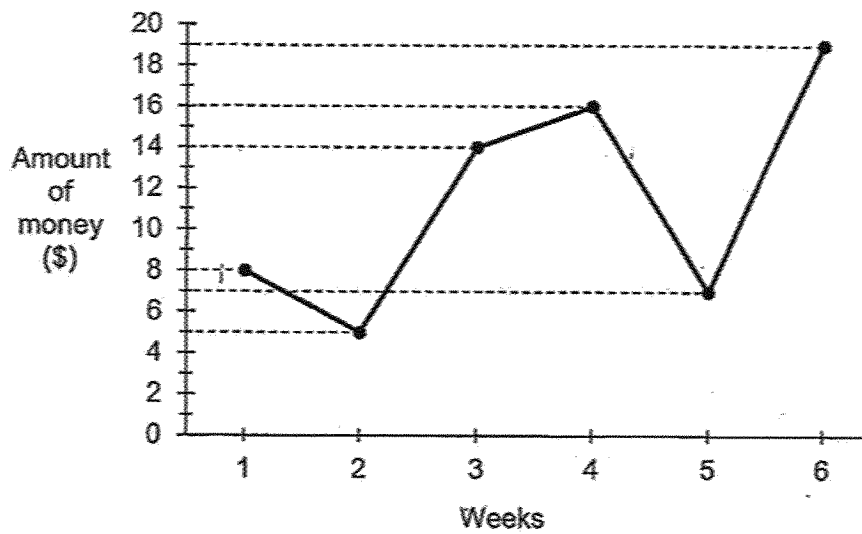
Ans (b): _____

8. Figure WXYZ is a rectangle. Find $\angle p$.



Ans: _____ °

9. The line graph below shows Dawn's savings over 6 weeks.

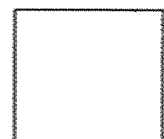


(a) What was Dawn's savings in Week 4?

Ans: \$ _____

(b) During which 1-week period was the increase in Dawn's savings the greatest?

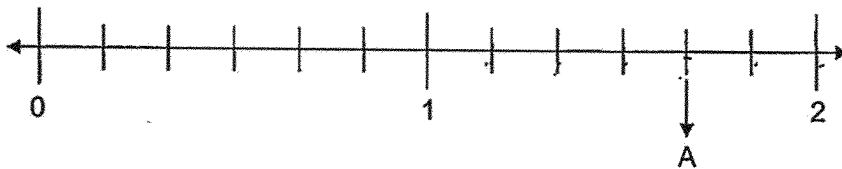
Ans: Week _____ to Week _____



10. Harry bought some brownies. He packed them into boxes of 6. Then, he had 48 boxes of brownies and 5 brownies were left unpacked. How many brownies did Harry buy?

Ans: _____

- 11.(a) What is the mixed number represented by A on the number line shown? Express your answer in the simplest form.

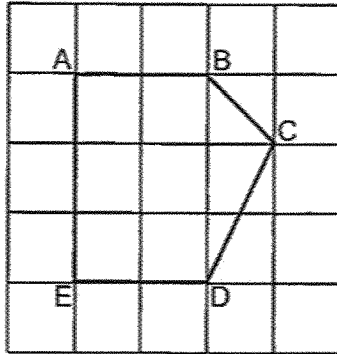


Ans (a): _____

- (b) Name a fraction greater than $\frac{2}{5}$ but smaller than $\frac{4}{7}$.

Ans (b): _____

12. (a) Figure ABCDE is drawn on the square grid shown.



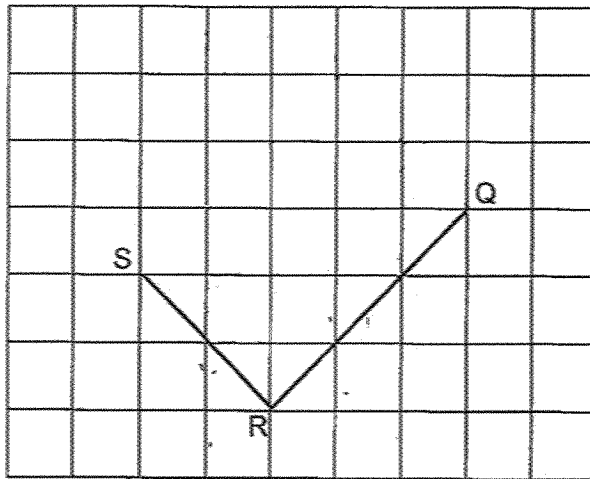
In the figure above, identify a pair of perpendicular lines.

Ans (a): Line _____ \perp Line _____

(b) The square grid shows the sides QR and RS of Rectangle PQRS.

Complete Rectangle PQRS by drawing two more lines.

Label Point P.



Section C:

Questions 13 to 14 carry 4 marks each. Show your working clearly in the space provided for each question and write your answers in the spaces provided.

Equations must be written. Marks will be awarded for correct methods and answers. (8 marks)

Do not write
in this
space

13. Jenny bought 2 tables and 3 chairs.

Each table cost twice as much as a chair.

Jenny spent a total of \$378.

(a) Find the cost of a chair.

Ans (a): _____ [2]

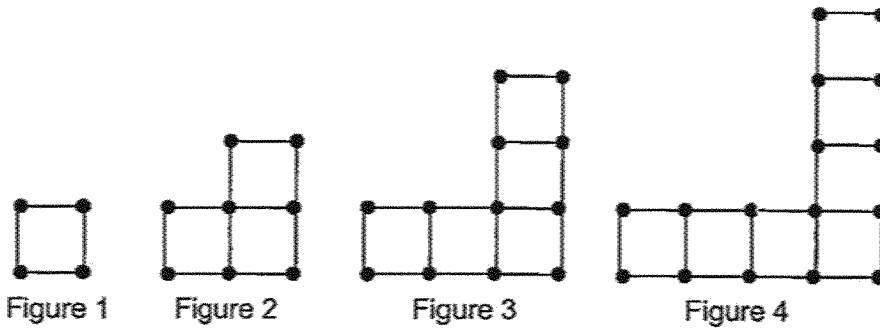
(b) Find the cost of the 2 tables.

Ans (b): _____ [2]



14. Johnny used squares and dots to form a pattern as shown below.

Do not
write in this
space



(a) Complete the table below for Figure 5.

Figure Number	Number of Squares	Number of Dots
1	1	4
2	3	8
3	5	12
4	7	16
5	(a) _____ [1]	(a) _____ [1]

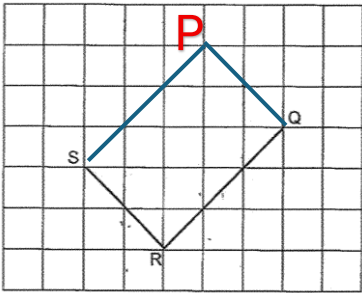
(b) How many squares are used to form Figure 12?

Ans (b): _____ [2]



End of Paper

SCHOOL : PAYA LEBAR MSG SCHOOL
LEVEL : PRIMARY 4
SUBJECT : MATHEMATICS
TERM : 2025 WEIGHTED ASSESSMENT 1

Q1	3
Q2	1
Q3	2
Q4	3
Q5	2
Q6	4
Q7	a) 21 b) 18100
Q8	41°
Q9	a) \$16 b) 5 to Week 6
Q10	293
Q11	a) $1\frac{2}{3}$ b) $\frac{3}{7}$
Q12	a) Line AE \perp Line ED b) 
Q13	a) $378 \div 7 = 54$ b) $54 \times 4 = 216$
Q14	a) $\frac{9}{20}$

